

Spring, 2015
Volume 15, Issue 1

President: Tim Moore
Vice-President: Jan Vandegrift
Treasurer: Eddie Mallonen
Secretary: Sally Pfothenhauer
Buildings & Grounds--Roland Eisch
Membership: Ed Newman
Personnel: Rich Marshall
By-Laws & Insurance:
Cheryl Sorenson
Activities: Joe Gambino
Grounds Manager: Vince Klitzman
Office Manager: Tracy Schmidt

CAMP EMERGENCY CELL:
608-432-1590

INSIDE THIS ISSUE:

Telephone Book	2
Board Meetings	3
Reminders	4
What's Happening?	5
What's New?	6
Scouters	7
Membership & Sales	7
Buildings & Grounds	8
Office Manager	9
Game Night	10
Treasurer's Report	11
Grounds Manager	12
Guests	13
Condolences	15
Recyclables	16
Activities	18-19

INSIDE CAMP DELTON CLUB, INC.



President's Update

Welcome back to the 2015 camping season. It seems things never slow down in the off-season.

We were able to complete Phase I of the lodge renovation in the off-season. Phase I expanded the office, added storage space, ADA compliant bathroom, new windows and insulation, lighting, reception area counter and closet. Please stop in the lodge and take a look around, it is awesome. The Finance Committee will be looking into ways to fund Phase II of the project.

The Electric Project is underway in Royal Oaks and Dells Village. The plan is to have these areas done by the end of June and then continue work in Wilderness. We hope to have the project completed this year. The existing street lights in Overlook are going to be energized by the new system and will be operating very soon. We are working on a plan for the street lights in the remainder of the camp. Please be careful in the construction areas as there may be trip and fall hazards.

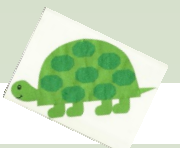
The Wilderness stairs are finally safe for your use. However, the path between the parking lot and bridge is slippery when wet and there are many tripping hazards caused by roots. Making the path safe will be a priority for our staff early this season. Until this repair is completed, please use caution when using the path.

There are many drainage issues throughout camp. Recently, we met with neighbors, Sauk County and a landscaper. We discussed what may be causing these drainage issues and the options we have for controlling them. A combination of several smaller, less expensive options may be what we try first. A committee is going to be formed with the intent of developing a plan and implementing some of these options this year.

We are all excited about another camping season. In order to make it enjoyable for all please remember to sign in, drive 10 MPH, be careful with camp fires, keep your pet on a leash, dispose of your trash appropriately, be respectful to your neighbors and respect Camp property.

Thank You!

Timothy J. Moore
President



TELEPHONE BOOK

	Site	Phone
President: - Tim Moore	50	608-444-1883
Vice-President– Jan VanDeGrift	428	608-206-1520
Treasurer– Eddie Mallonen	404	414-484-7541
Secretary– Sally Pfotenhauer	68	414-690-2820
Buildings & Grounds- Roland Eisch	434	608-278-8688
Bylaws & Insurance - Cheryl Sorenson	430	608-443-8366
Personnel— Rich Marshall	40	920-205-8460
Membership—Ed Newman	316	251-961-1899
Activities—Joe Gambino	548	630-533-0603
Camp Office		608-254-8361
EMERGENCY CELL		608-432-1590

In the event of an emergency, call 911 FIRST, then call the camp emergency cell.

Please call the Office phone for all calls that are not a true emergency! When the office is closed, you may leave a message for follow-up by office staff.

Let's keep Camp Delton Club beautiful!

Campsites and trailers should have been cleaned up by Memorial Day! Please remove garbage, rake leaves, ensure your site number is visible from the road, and remember to wash all sides of your camper or park model. If you weren't able to clean up by Memorial Weekend, please give us a call at the office. For more information see Rules & Regulations, Section 3: #17 and #18 .

Have you joined the Camp Delton Club.com Members Only Message Board? This is a place where you can ask questions, read and provide restaurant reviews, read about updates on the Electric Project, and sell your stuff! You will need to register in order to access the Message Board. Go to www.campdelton.com, Members, then Members Only.



2015 BOARD MEETING SCHEDULE

May 16	9:00 a.m.	First regular meeting of the season
June 20	9:00 a.m.	
July 18	9:00 a.m.	Annual Meeting, Board Meeting Follows
August 15	9:00 a.m.	
September 19	9:00 a.m.	Final meeting of the season

The agenda will be posted on the web site and bulletin board in the lodge one week before the meeting. Off-season meetings will be posted in the fall.

LANDSCAPE TECHNIQUES, LLC
&
COUNTRY GARDEN
CENTER



RESIDENTIAL & COMMERCIAL LAWN CARE
TREES, SHRUBS, ANNUALS, PERENNIALS. RETAINING WALLS, SOD,
SEED LAWNS, DESIGN WORK, ANY & ALL OUTSIDE WORK

VERN ESSER
DON LEATHERBERRY

355-0617/355-0699 Fax
S4082 Hwy 12, Baraboo
landtech@merr.com

MITTLESTEADT
HANDYMAN




Painting
Plumbing
Firewood
Pressure Washing

LAWNMOWING



JAMES MITTLESTEADT
S2428 Hwy. V
Reedsburg, WI 53959

608.415.7878



Angelic Hypnosis & Reiki
Helping Everyday People with Everyday Problems

Gail E. W. Schmiedlin, CH, RMT
Certified Hypnotherapist - Reiki Master

Member: National Guild of Hypnotists
Cell: 608-477-5549

By Appointment Only:
120 3rd St Suite E
Baraboo, WI 53913

Email: AngelicHR@liniams.com

NOTICE REGARDING ADVERTISEMENTS IN OUR NEWSLETTER:

Inclusion of advertisements in our newsletter is not meant to imply recommendation or endorsement of any company, contractor, or individual. Camp Delton Club is not liable for any work, payment, or ensuring work is completed in a timely manner. You, as members, and consumers, are solely responsible for the outcome of any business arrangement made with a company or individual you do business with.

**CAMP DELTON CLUB, INC. HIGHLY RECOMMENDS THAT MEMBERS
CHECK REFERENCES, LICENSE, and INSURANCE!**



REMINDER BOARD

Volunteering at Camp Delton Club

Our members can make a difference! There are many areas where you have the opportunity to contribute your skills and knowledge. We need members to participate on committees, help with the grounds, and help out with activities. Parents: would you like to organize weekend activities for the kids? All of our activities operate by the generous donation of time by member volunteers.

Not everyone is able to volunteer, so if you can't, please remember to thank those who do!

CONTACT CHANGES... Please notify the office of any changes in mailing address, phone number (including dropping a land line) or email address!

THE **10MPH SPEED LIMIT** APPLIES EVEN WHEN THERE AREN'T MANY MEMBERS IN CAMP!

PLEASE REMIND YOUR GUESTS!

ALSO, PLEASE REMEMBER **HANG TAGS** MUST BE ON YOUR REARVIEW MIRROR WHILE IN CAMP

Dumpsters: LOCATED BY THE MAINTENANCE BUILDING! Also, be sure to put only recyclables in the recycling dumpsters. They are the 2 dumpsters on the left as you look at them from the maintenance building.

Bagged leaves, sticks, and branches may be left by the edge of your site for the grounds staff to pick up.

DVDs are meant for use at Camp Delton Club while you are here. Please return to the office before leaving!

We have quite a few Membership Certificates in the office needing members' signatures. We also have some ready for pick-up. When you come to camp, please remind the office staff to have you sign or pick up your certificate.

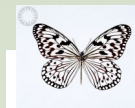
EMERGENCIES

In an emergency **call 911 FIRST**, then call the Camp emergency cell at (608)432-1590. Also, it's a good idea to have the emergency cell number programmed into your cell phone, which will save time looking for the number. Please use the office phone number for non-emergencies: (608)254-8361.

Vehicles and boats must be removed from unoccupied sites by May 31st.

RECYCLING & WASTE

Pellitteri is the company that will be providing our waste and recycling removal service. For recyclables, please use the first two dumpsters (on the left if looking at them from the maintenance building). A full list of recyclable materials can be found on page 16!



What's Happening?

The Bylaws Committee is currently reviewing the Articles of Incorporation and the Bylaws. Updates to both will be presented at the July meeting.

2015 elections are underway! If you haven't received your nomination form, please give us a call and we will get one to you. We have a sign up sheet for volunteers to be on the nominations and election committee on the bulletin board in the lodge.

The Electric Project is moving along. Street lights are on in Overlook and the trenching and boring in Royal Oaks and Dells Village should be done by the end of May. Alliant will begin hooking up the pedestals and soon Phase II will be up and running!

Looking for a Great Summer Read?

Author Jeanie Le Claire offers two!



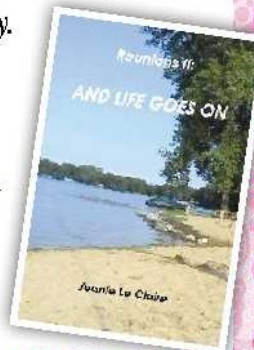
REUNIONS

Why stay in a loveless marriage when that one true love waits for you?

A full box of tissues romantic novel set in Kenosha County.

REUNIONS II: AND LIFE GOES ON

The story continues in this nail biting romantic thriller!



**Purchase online at www.janieleclaire.com
or call: 262-553-9096 to Save S&H**

D222439

Summer Office Hours

9 AM - 10 PM

**Remember to bring
your gate card and
keys! You can call
during office hours
to make arrange-
ments to get in after
hours.**



You can also call (262) 818-5931 or stop by Site 37 to purchase!



What's New?



When you come to Camp Delton you might notice a black locking mailbox at the front entrance to the lodge. This is for members to use when they want to drop something off, but the office is closed. You can drop off DVDs, keys, checks, and just about anything else, but please, NO CASH!

Be sure to check out the newly renovated lodge! You will find a cleaner, more tidy look, along with a restroom on the main level.



ATTENTION MEMBERS!
STATE LAW REQUIRES
THAT YOU SIGN-IN ANY
TIME YOU ENTER CAMP
DELTON— EVEN IF
YOU'RE ONLY HERE FOR
A SHORT VISIT.

Wanted! Thinking of trading in your park model? We have several members who might be interested in purchasing directly from you. Please call the office to be put in touch with these members.

Don't forget to fill out a yellow Buildings & Grounds form if you are replacing your trailer. This is to ensure compliance with state laws and Camp rules. We need a couple weeks notice! Thanks!



Phone (608) 356-5778

Fax 608-356-0999



ANDY HASKINS - OWNER

603 8th Avenue
 Baraboo, WI 53913



**UNITED
ELECTRIC, INC**

Commercial • Industrial • Residential

Mark Hamm

Cell: 608-963-4655	Dells office: 608-253-3371
Email: mark@unitedelectricwi.com	Main office: 920-696-3580
www.unitedelectricwi.com	Fax: 920-696-3592
1897 Broadway Road	715 Morgan St., P.O. Box 247
Wisconsin Dells, WI 53965	Clyman, WI 53016

POST ELECTRIC PROJECT CLEAN-UP

Our grounds staff has a lot of landscaping work to do following the in-ground installation of the electric cabling. It's going to take some time to have all the ground repairs done and seeded. Members are not required to repair their sites but if you are able and willing, please feel free to do the repair on your site. Soil is available by the maintenance building. Let us know and we'll see that the seed is put down on your repair.

Thanks for your help!

The Scoop on Scooters!

Please help keep yourself and others safe. Scooters can be a fun and inexpensive form of transportation but please follow the rules:

- All gas powered motorized vehicles must be licensed, insured, properly muffled, and the driver **MUST** be licensed. In other words, they must be street legal.
- Electric motorized scooters may not exceed the weight 50 # nor be capable of speeds over 15 mph.
- Riding Double: Vehicle must be at least 80 cc in order to ride double and the rider must be able to reach the footrests. Passengers under the age of 18 must wear a helmet.

Membership and Sales

Over the winter we had four sales. Jackie, Albert, and Colin Pierce are new members at site #462 and Scott Rogers and Rod Rotar are new members at site #82. Bill and Celena Mooren purchased site 14, and Mitch and Pat Ghoca and Dan Ghoca are new members at site 501. Welcome to Camp Delton Club!

We currently have 35 memberships available for sale.

If you know anyone who may be interested in a membership, please refer them to the Membership Sales link on our website, www.campdelton.com or have them stop in or call the office. Word of mouth is a great source of advertising!

If you plan to sell your membership, please contact Tracy at the office. There are 2 options available and she will be happy to explain them to you. If you desire to sell on your own, there are forms that must be completed and fees to be paid before a buyer will be accepted as a new member. IF YOU HAVE ANY QUESTIONS, PLEASE CALL THE OFFICE!

Ed Newman
Membership and Sales



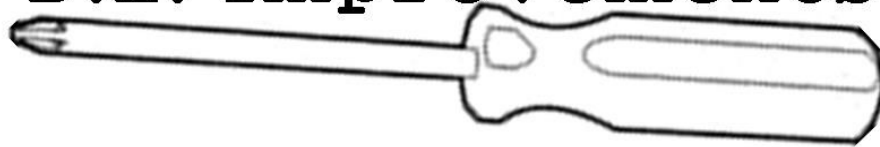
Winterizing

**Pressure
Washing**

**Tree
Trimming**

**Laminate
Floors**

D.L. Improvements

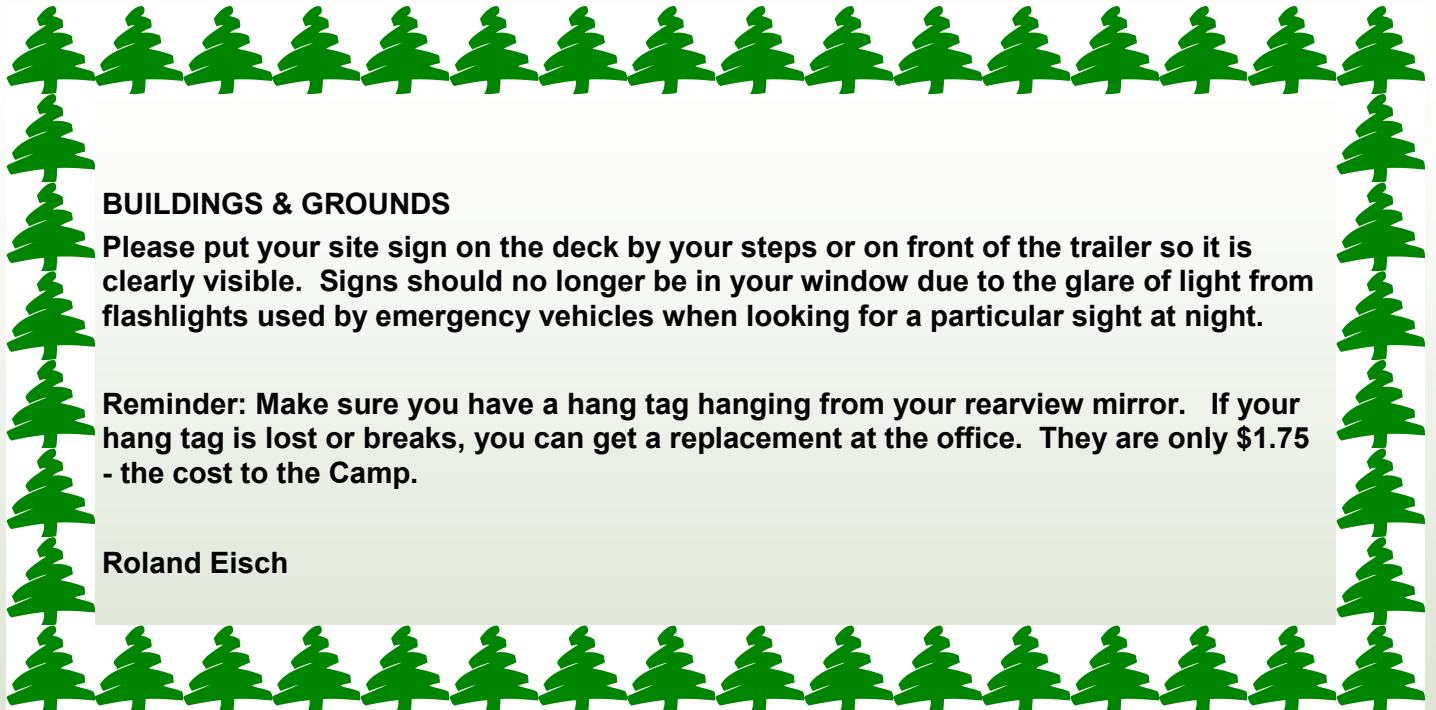


Shed
Building, painting,
staining, and repairs

Roofing
Rubber, metal, shingles,
and repairs!

Deck
Building, repairs,
paint or stain

David Luke— General
Contractor
(608) 432 1564
davidlyndon@gmail.com
230 Water Street
Lyndon Station, WI 53944



BUILDINGS & GROUNDS

Please put your site sign on the deck by your steps or on front of the trailer so it is clearly visible. Signs should no longer be in your window due to the glare of light from flashlights used by emergency vehicles when looking for a particular sight at night.

Reminder: Make sure you have a hang tag hanging from your rearview mirror. If your hang tag is lost or breaks, you can get a replacement at the office. They are only \$1.75 - the cost to the Camp.

Roland Eisch



Greetings From the Office Manager

WELCOME BACK!!!

I always enjoy the return of the Camp Delton Club members each spring. It's great to see you after the months when you have all gone home or down south.

I would like to remind you that this is severe weather season. There is a new outdoor warning siren located on the corner of Xanadu Rd. and Commerce St. right behind Walmart but it is not going to be heard inside when the TV is on or you are sleeping. If you don't already have one, please consider purchasing a weather radio. Also, you can have alerts sent to your cell phone from a broadcasting station such as wkowtv.com. In the event of a tornado, use the lower level of the lodge as a storm shelter (open 24/7 from the side by the green shed).

Also, be sure you have smoke & carbon monoxide detectors in operating order. If you left your battery in over the winter, it would be a good idea to change it.

Please remember to stop by the lodge to sign in. Also, please remember to put your hang tag on the rear-view mirror while in Camp!

I hope you have a great summer and have lots of opportunities to enjoy Camp Delton Club!

If you need anything or have any questions, please feel free to stop by or give us a call.

Tracy Schmidt

Advertising space available!

Interested in advertising your business in the Camp Delton newsletter?

Prices include advertising in all newsletters printed during the year:

Full page:	\$100
1/4 page:	\$40
1/2 page:	\$60
1/8 page:	\$30 (business card)

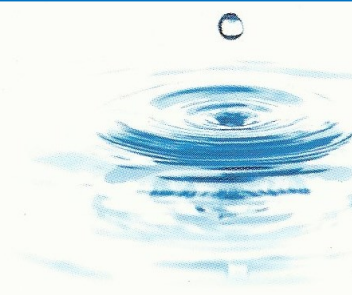
EVOLVE MASSAGE
Where Change Happens

1777 W. Main Street
Suite 123
Sun Prairie, WI 53590

KELSEY SCHMIDT
Massage Therapist

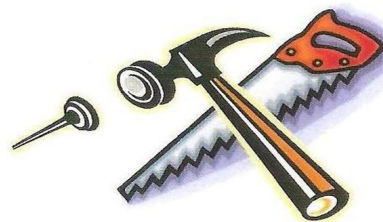
evolvemassage@gmail.com

(608) 228-4304
(608) 214-2032



Fischer Construction

Bob Fischer
 Home: 608.254.7065
 Cell: 608.432.1736
 fischerconstruction@yahoo.com
 519 Capital Street
 Wisconsin Dells, WI 53965



All Remodeling

Roof Repairs
 Misc. RV Repairs
 Plumbing Repairs
 Electrical Repairs
 Hot Water Heater Repairs
 Trailer Leveling
 Painting - Interior & Exterior
 Laminate Flooring
 Tile Flooring

Awnings
 Siding
 Roofing
 Landscaping
 Sheds
 Decks
 Deck Staining
 Pressure Washing -
 Decks & Homes

**** TRAILER WINTERIZING ****

LAKES GAS CO.

Reliable Gas Delivery
 Furnace & Water Inspections/Repair
 Appliance Maintenance Programs
 Gas Check Program
 24-Hour Emergency Service

2349 Main Street E.
 Reedsburg, WI
 608-524-2355
 877-203-0774

AmeriGas®

America's Propane Company

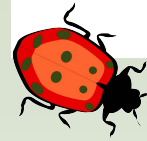
Nancy Berger

Operations Supervisor & Customer Relations Rep.

607 South Blvd., Baraboo, WI 53913
 Phone: 608-356-6647 Fax: 608-356-5884
 Add'l#: 1-800-788-9250

GAME NIGHT!

Game night last season was a success and many attended. Everyone had a good time and new friends were made! Be sure to check with Cheryl in the office for information about the 2015 game night. We are thinking of some possibilities for 2015 and need your input!



Treasurer's Report

Welcome back! It has been a very busy off-season.

As you arrive at the camp you will, no doubt, notice the completion of the first phase of the lodge renovation. In addition to providing much needed storage and office space for our staff, the project also provided an ADA accessible restroom on the lodge's main level, a new sales counter, and new energy efficient windows.

Those using the Wilderness stairs to Mirror Lake will also notice that the staircase has been brought up to code by a reputable contractor.

Members of the board have also been investigating several projects throughout the camp including, but not limited to the following:

- 1) Renovation of the basketball and volleyball courts and horseshoe pits, as well as the possibility of a play ground and bon-fire pit near the pavilion
- 2) Solutions to the standing water issues scattered throughout the campground
- 3) The possibility of providing rental canoes and bicycles via the lodge
- 4) Upgrade and maintenance of the Mirror Lake Mountain Wilderness Trail
- 5) A full internal audit to help reduce the cost of our pending external audit
- 6) Implementation of a leaf composting system to reduce several erosion issues around the campground while providing proper compost to our members for lawns and landscaping

As treasurer my first question with any project is, "How do we pay for it?"

With most of these projects the greatest cost is labor. As members, we all like to see the value of a C.D.C. membership increase when issues are resolved and amenities are improved. As members we can all help to bring about these changes and help to keep our membership dues in check by volunteering. Any project that requires contracted or campground staff labor impacts our budget. The end result is either an increase in dues or the delay of a project. Please consider donating some of your time this season to help us all improve Camp Delton Club. Be sure to check with the lodge office and the C.D.C. website and message boards for your opportunity to participate.

Again, I would like to commend the staff and the budget committee for their efforts to reduce annual dues while still meeting our obligations. As of April 30th, 2015 we are at 21.25% of our budgeted income and 29.41% of the budgeted expenses. We currently have \$185,898.52 in reserves invested in CDs.

I look forward to seeing you all in camp.

Eddie Mallonen, Treasurer

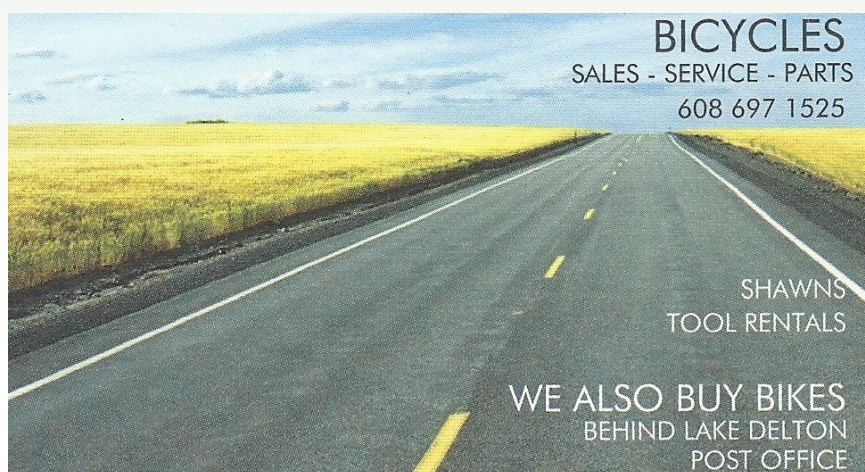




From the Grounds Manager

The new season has started and a lot of you are doing spring clean-up. Every week we are getting old lawn mowers, grills, and refrigerators. They've been dumped off next to our dumpsters. Instead, please take them out front next to the green shed off of Xanadu Road for the scrap man to pick them up. Also, TVs and electronics don't go to the dumpsters. They need to be taken to where electronics are accepted for recycling. Computers for You in Reedsburg will take your electronics. Best Buy will even take TVs for free. Waste Management has been throwing metal and construction material onto the ground when they dump the recyclable containers.

Thanks,
Vince



All through camp:



Please consider patronizing those who advertise in the newsletter. They help support production and mailing costs of the newsletter through their advertising.

Many thanks to our advertisers!

When we come across a rules violation, it is often a guest who is in violation. Often times, a member has allowed a friend or family member to use his or her site while the member is not present. PLEASE ensure your guests understand the rules and regulations. There is a one page short version of the more commonly broken rules on the next page. Please have a copy available that you can give to your guests or leave at your site. (You can also get this at the office). Remember, when your guests violate a rule, the member is ultimately responsible. The rules are not here to restrict people, but to ensure a safe and enjoyable experience for everyone. Information to pass along to your guests is on the next page. A full copy of the Rules and Regulations is available at the office or by email. *Thank you!*



GUEST INFORMATION

For your stay with us to be enjoyable, here are a few things about the Club that are important for you to know. Please take the time to read them. All guests at guest sites must be pre-registered by a member.

Storm shelter: The lodge lower level is accessible 24 hours/day, 7 days/week from the side door near the pavilion. This area may be used as a storm shelter.

This is not a complete list of rules. A complete list is available at the office

1. The lodge is open from 9 a.m. until 10 p.m. every day, Memorial Weekend to Labor Day. For other periods, check the posted hours.
2. Entry at gate when office is not open is by gate card only.
 - For late/early arrival, call during office hours to make arrangements.
 - The camp emergency phone is for emergencies only. Early/late arrival is not an emergency.
3. The speed limit in the Camp is 10 MPH.
4. Fires must be attended at ALL times and completely out when you retire for the evening or leave your campsite.
5. All pets **MUST** be on a leash at **ALL** times. You must pick up after you pet.
6. Children must be 10 yrs. old or with someone 12 yr. old or older to be in the lodge.
7. Emergency messages will be delivered to your site.
8. Curfew in the Camp is 11 p.m. Children under the age of 18 yr. must be at their campsite by then.
9. Quiet time is from 11 p.m. until 8 a.m.
10. You must be 16 yrs. of age and have a valid driver license to operate a moped.
 - Skateboarding, roller blades, roller skates, bicycles (without lights) scooters and motorized scooters (without lights) are prohibited from dusk to dawn
 - Electric motorized scooters may not exceed the weight 50 # nor be capable of speeds over 15 mph.
 - Gasoline powered scooters, pocket bikes, dirt bikes, mini bikes, go-carts or any other powered new technology vehicles are not allowed ****ALL GAS MOTOR VEHICLES MUST BE LICENSED AND INSURED! THE RIDER MUST ALSO BE LICENSED.**
 - All Motor Vehicles, including mopeds, motor scooters, and motorcycles, must be licensed, insured, properly muffled and operated by a licensed driver. Conditions for driving in camp include observing the 10 mile per hour speed limit, obeying all traffic signs, and prudent operation. (Rev. 7/21/01).
 - In order to ride double on a moped, the moped must be at least 80cc. The rider must be able to reach the footrests when riding. Any passenger under the age of 18 must wear a helmet

No more than one recreational vehicle may be located in any campsite at one time. One additional tent is allowed.

POOL:

Pool notices and signs are posted around the pool and entrances. Violation of these rules will result in disciplinary action including and without limitation to the suspension of pool privileges and fines. **The fines will be \$100 and levied every 14 days** up to a maximum of \$500.00. When any violation occurs and results in a cost to the Club to empty and clean the pool, the member(s) will be held accountable for the cost. Members are accountable for their guests. (Rev 9/22/12)

NO GLASS OF ANY KIND OR SHAPE MAY BE IN THE POOL AREA

No Food in pool area

The pool is open from 10 a.m. to 10 p.m. No cut-offs or colored T-shirts allowed in the pool.

Children under the age of 12 yr. must be accompanied by an adult. An adult is considered to be 18 yr. of age or older.

Adult swim is from 4 p.m. to 6 p.m. every day, including holiday weekends.

Members are responsible for their guests! Unpaid fines, if any, will be charged to the member's account.



CENTERS
Sales | Parts | Service



Trades Welcomed - Financing Available

Large Selection of New & Preowned:

- | | |
|----------------|-------------------|
| • Park Models | • Park Trailers |
| • Toy Haulers | • Travel Trailers |
| • Tent Campers | • 5th Wheels |
| • Expandables | • Lite Weights |



3155 Scenic Rd.
Slinger, WI 53086 US 41 / 45

SLINGER
800.568.2210



E10879 Deer Run Rd.
Baraboo, WI 53913

WIS. DELLS
877.898.7236

www.scenicrv.com

Condolences & Get Well

Tina Usedom of site 51 had a mastectomy in November as part of the plan to fight breast cancer. She's been undergoing chemo and radiation over the winter. Please pray for her full recovery and health.

LeRoy "Boots" Schmidt passed away early in January. We wish to express our condolences to Phyllis, Randy, Marlene, Lee, Tamara, as well as all the family and friends of Boots. The family requested memorials to Phyllis which will be used to place a bench on the corner by their site in Wilderness in memory of Boots.

Our sympathies to family and friends of Vivian Sisler who passed away in February. Vivian was a member for many years in Royal Oaks.

Mary Jane Melander passed away in April. She was a member in Wilderness for many years. Our sympathies to Mary Jane's family and friends.

Notice: If you plan to make any changes to your site, please err on the side of caution . Fill out a “Yellow Buildings & Grounds Form” before purchasing any supplies, stain, trees, campers, park models, or building materials. Information is available at the lodge. The purpose of the form is to ensure changes conform to the Rules & Regulations.

If you are building a deck, or add-a-room, a building permit is required from the Village of Lake Delton. The Village requires you to supply them with your approved form from Camp Delton Club with your application. Thank you!

Please welcome our 2015 staff:

Grounds
Shawn Leggett
Danny Gould
John Rickert

Good to Know

Did you know you can avoid making one large payment for your dues in April? You can make small payments monthly or when it works for you throughout the year. These payments will apply to your next year's fees. This is sometimes easier than coming up with a lump sum when the dues are due. To find out more about budget payments, please give us a call at the office!



RECYCLING INFORMATION

All recyclables should be put into your all-in-one recycling dumpster

Paper

- Cardboard (empty)
- Catalogs, magazines & phone books
- Cereal & cracker boxes (empty)
- Computer & office paper
- Envelopes & junk mail
- Holiday gift wrapping paper (no foils)
- Newspapers
- Paper egg cartons
- Paper grocery bags
- Paper milk and juice cartons or boxes
- Pizza boxes (no food or grease)

Plastic

- All plastic bottles (no motor oils or gasoline)
- Plastic containers / cups #1-7, including #1 deli containers
- Plastic bags (grocery, newspaper, dry cleaning, etc. - no black or brown bags) - place clean, dry bags into a clear or transparent bag and tie shut; a full bag should be smaller than a basketball

Metal & Glass

- Aerosol cans (empty)
- Aluminum cans & aluminum pie plates
- Glass bottles & jars (clear, blue, brown or green translucent glass)
- Metal pots & pans
- Small metal appliances (toasters, blenders, etc.) — nothing larger than a basketball
- Small metal plumbing fixtures & pipes (faucets, valves, pipes 2"-12" long)
- Tin & steel cans

NOT Recyclable:

- Brake rotors / drums
- Deli containers - except #1 plastic
- Frozen food or microwave dinner plates
- Glassware & ceramics
- Metal items heavier than 10 pounds
- Mirrors & windows
- Motor oil or gasoline containers
- Plastic film, wrap & Styrofoam
- Misc.: Carpet, clothing, diapers, fishing line, food, hoses, ropes & shoes

RECYCLING Tips

- Should you choose to bag recyclables you place into your dumpster, please use clear or transparent bags and leave open — do not tie or seal. If you use brown Kraft/paper bags, do not staple or tape shut.
- All items should be loose and empty. Do not place smaller items inside of larger containers.
- Your recycling dumpster will not be emptied if it contains trash, yard waste or prohibited items.
- If you are unsure if something is recyclable, please call our customer service team at (608) 257-4285.



Kilbourn Improvement

For those who demand the best!

- * **ROOFING**
- * **SIDING**
- * **WINDOWS**
- * **FLAT ROOFS**
- * **ADDITIONS**
- * **INSULATION**
- * **GUTTERS**
- * **REMODELING**



803 Clara Ave.
Wisconsin Dells, WI 53965

Office: (608) 254-8621
Cell: (608) 393-2842

www.kilbournimprovement.com

Improving Homes Since 1966

2015 ACTIVITIES SCHEDULE

May 23, 2015	Kick Off the Season 5:00 pm
June 13, 2015	Camp Wide Rummage Sale 9:00 am
	Bake Sale for Playground equipment by the Lodge
July 4, 2015	4 th of July Bike Parade
July 4, 2015	Pig Roast and Music
Aug 8, 2015	Ice cream sundae social
Aug 8, 2015	Just appetizers / Pot luck
Sept 5, 2015	Spaghetti Dinner
Sept 6, 2015	Trick or Treat
Oct 3, 2015	End of Season Party and bonfire



If there are any other ideas please let us know. This is just some of ideas for the season. Anyone interested in being on the activities committee, leave your name at the club house. It would be nice to get everyone involved in activities

2015 Activities

The Welcome Back Dinner on May 23 was a great success to kick off the new season. We would like to give a big thanks to all who helped, donated, and supported the event.

The next events will both be June 13. One is a rummage sale to be held out by the road and the other is a bake sale in the lodge. A sign up sheet is in the office.

The money made this season will go for playground equipment by the lodge and repair the existing items up by the lodge, like new basketball hoops and sand for the volleyball court. We also plan to paint the shuffle board court.

Memorial Weekend Raffle Winner:

Thank you everyone who bought raffle tickets! We held the drawing at the Welcome Back Dinner May 23rd. The lucky winner is Carrie Houston of site 73. She won \$107 but donated back \$25 plus purchased the ditsy bird on the raffle ticket container for \$40! Thanks for your support Carrie!

Joe Gambino, Activities Director, and
Jill Brown and Carrie Houston, site 73



Rummage Sale

June 13, 9:00 am

By the green building on Xanadu Road

Space \$5.00

Rent a table \$10.00

It will be advertised in the newspaper and on Craig's List



The money will be used for advertising and playground equipment!



Bake Sale

June 13, 9:00 am

In Lodge

All baked goods would be appreciated
to help with purchasing playground
equipment!



E10305 Xanadu Rd. • Wisconsin Dells, WI 53965

www.campdelton.com

CARPET CLINIC

Professional Carpet Cleaning

Are you looking for someone to clean the carpets while you sit back and relax?

- *We use a powerful truck-mounted steam clean system that will thoroughly clean your carpets*
- *We specialize in stain removal*
- *Can help with odor control*
- *Can provide carpet protection to help protect your carpets from stains*
- *Can clean your upholstery*
- *We have been in the business for over 21 years; you can depend on us.*

Main Floor \$50.00

Lofts (incl. stairs) \$15-25.00

Carpet Clinic-

Rick Long

3088 Oak Road

Cottage Grove, WI 53527

608-873-4608

Also located at **site #540** feel free to stop by